

Lab 3

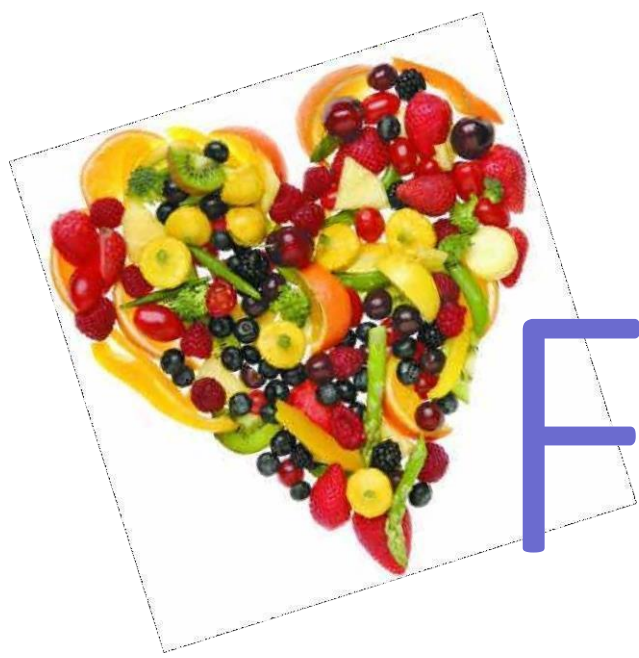
Pharmacognosy

PHG112



The background is a dark blue gradient. On the left side, there are several overlapping, curved, light green shapes that create a sense of depth and movement. On the right side, there is a stylized, light-colored outline of a leafy branch, with several leaves of varying sizes and orientations.

Faculty of **Pharmacy**

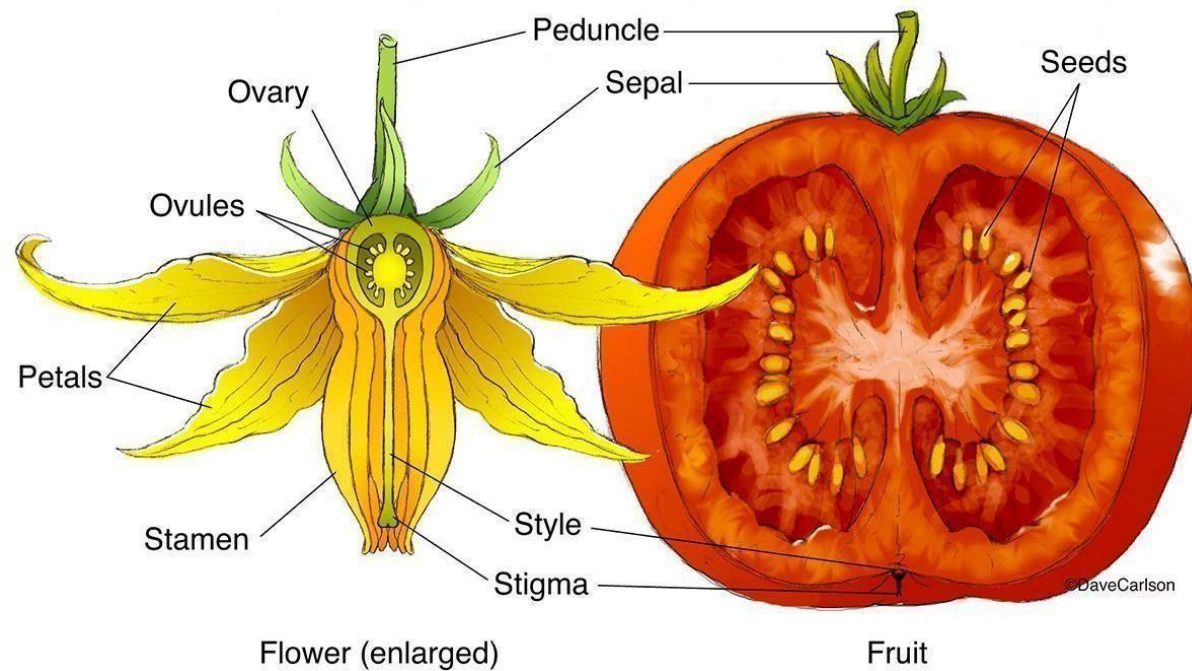


Fruits



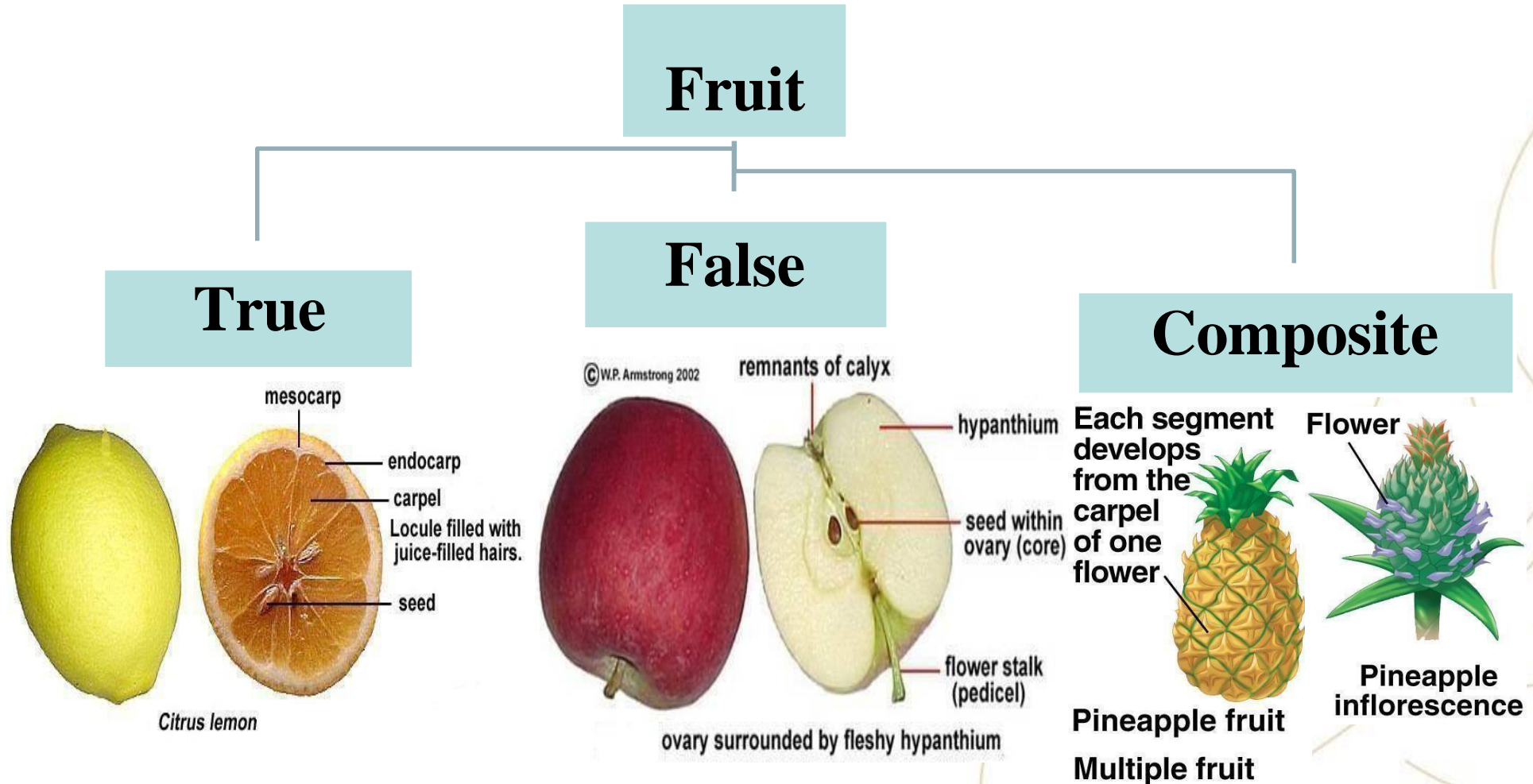
Definition:

The whole product of development of gynaecium after fertilization.



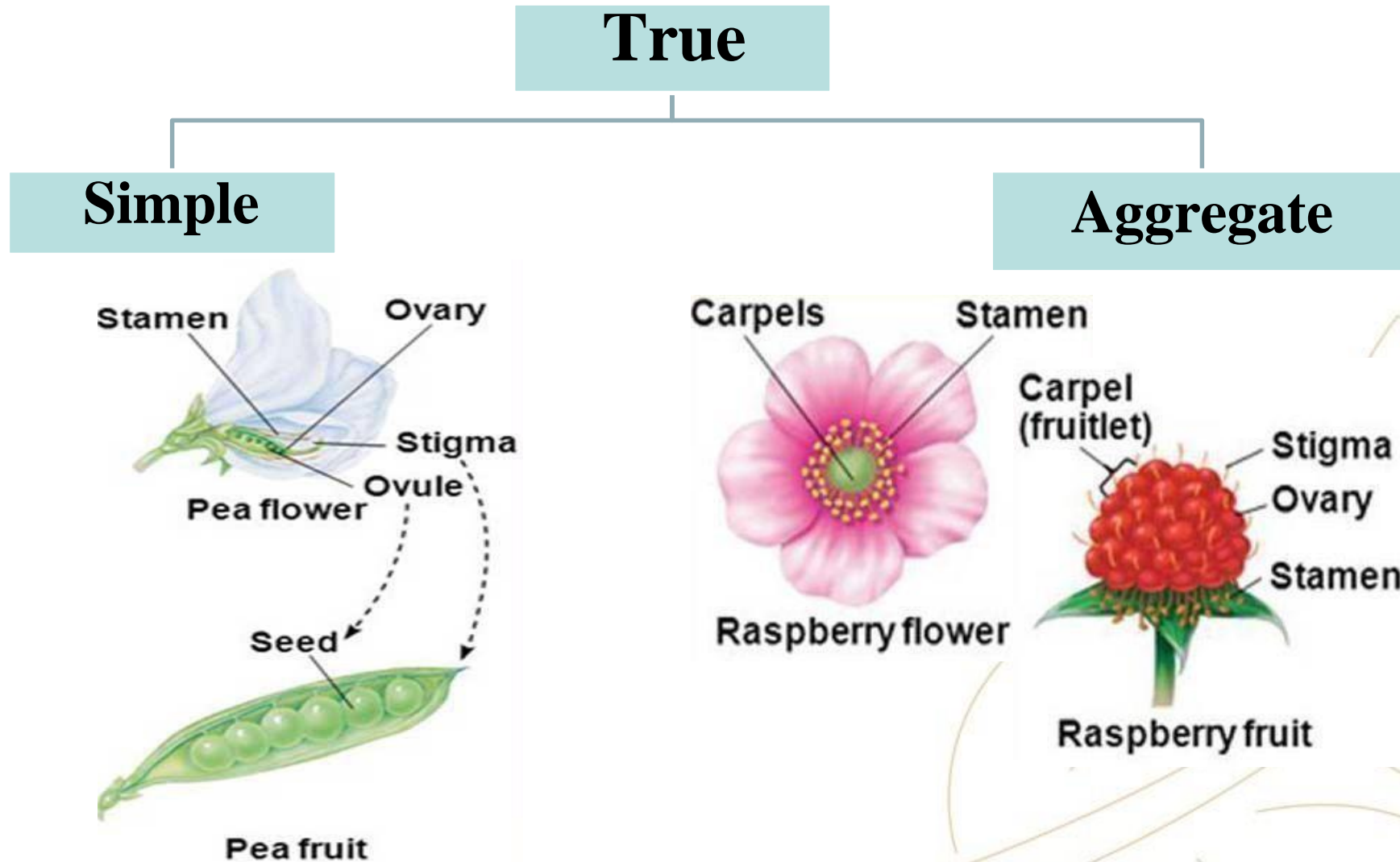
Classification

- According to the floral parts used:



Classification

- According to the type of gynaecium:

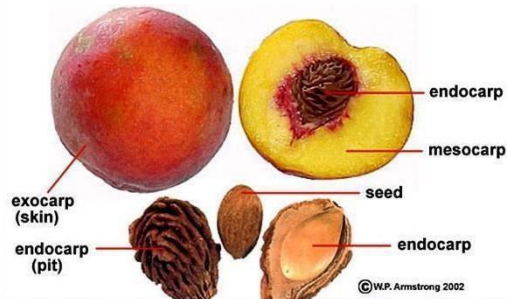
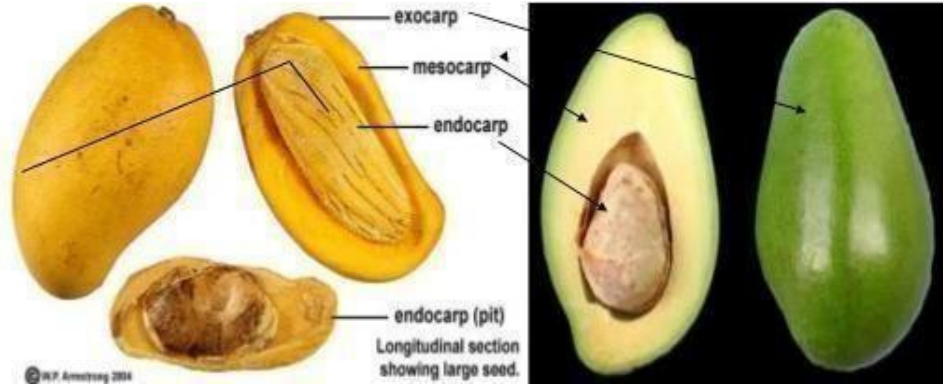


Classification

- According to the type of pericarp:

Simple

Succulent



Drupe (fleshy fruit with a stony endocarp)

Dry

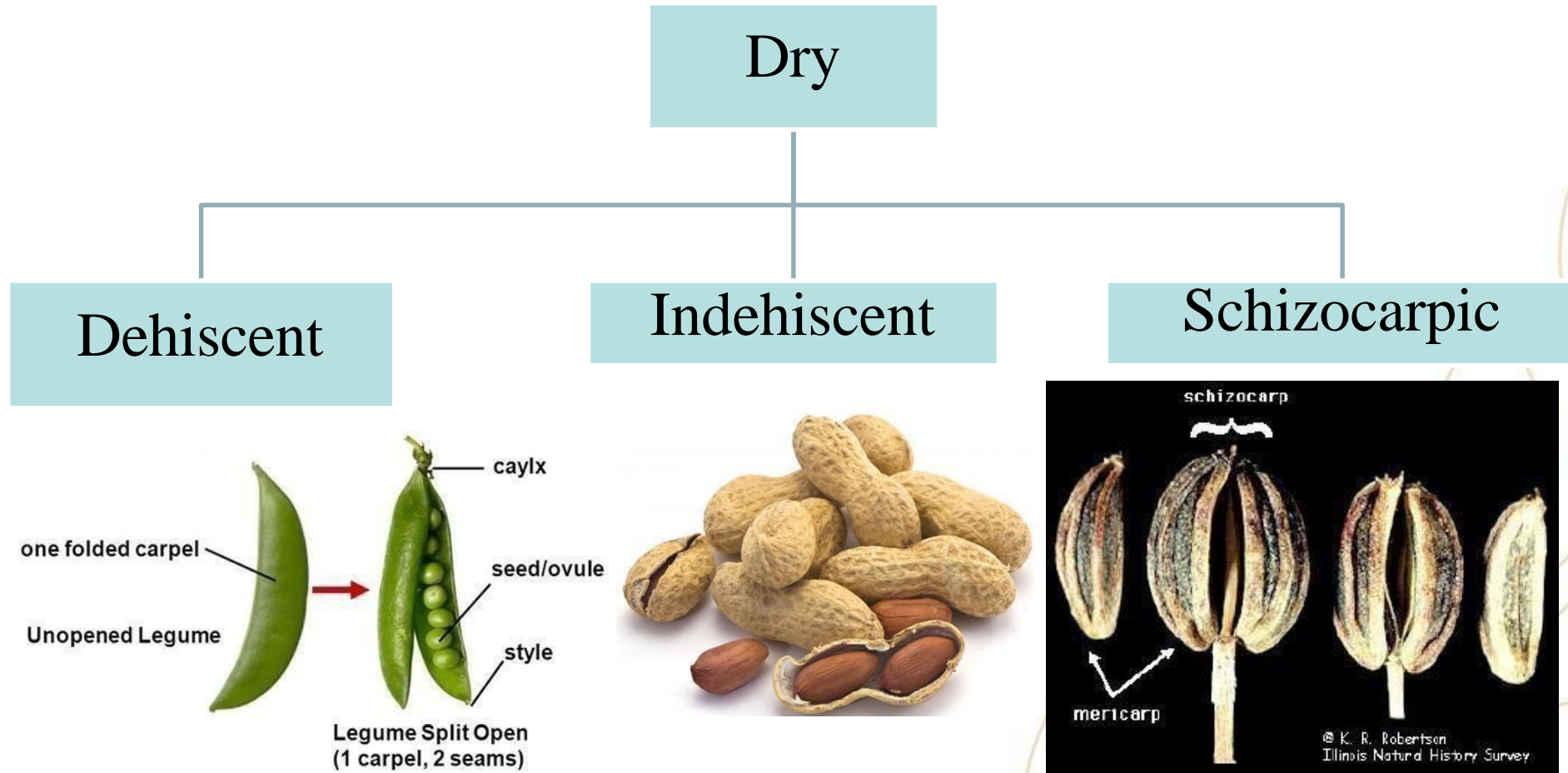


© W.P. Armstrong 2001



Classification

- According to the behaviour after ripening:





Fruits



Fennel

- **Origin:**

It is the dried ripe fruits of *Foeniculum vulgare* family Apiaceae (Umbelliferae).



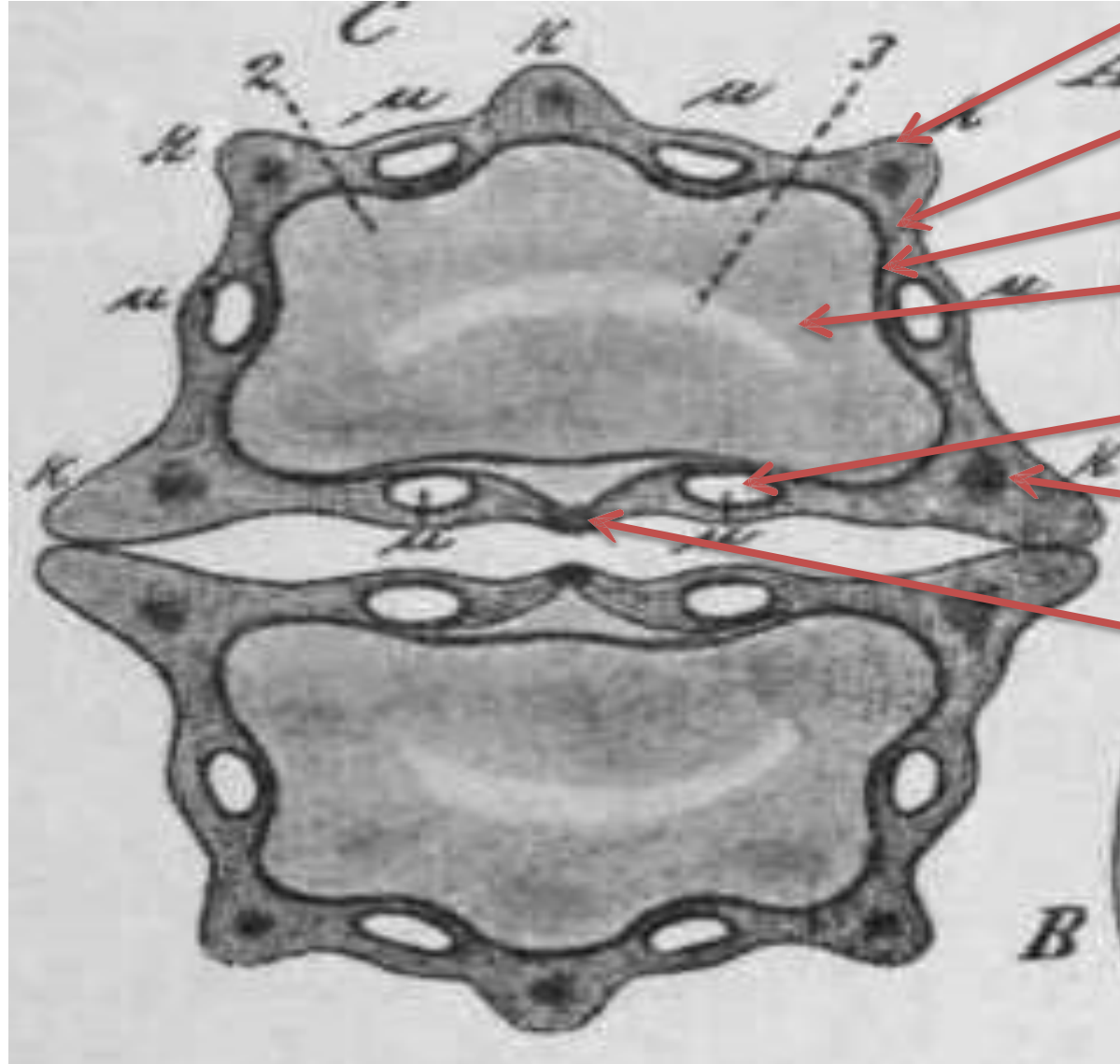
Morphology:

- **Shape:** Cylindrical
- **Colour:** Yellowish green
- **Odor:** Aromatic
- **Taste:** Sweet taste
- **Surface:** Glabrous

Primary ridge
Secondary ridge



T.S.



pericarp

mesocarp

endocarp

endosperm

vittae

Vascular

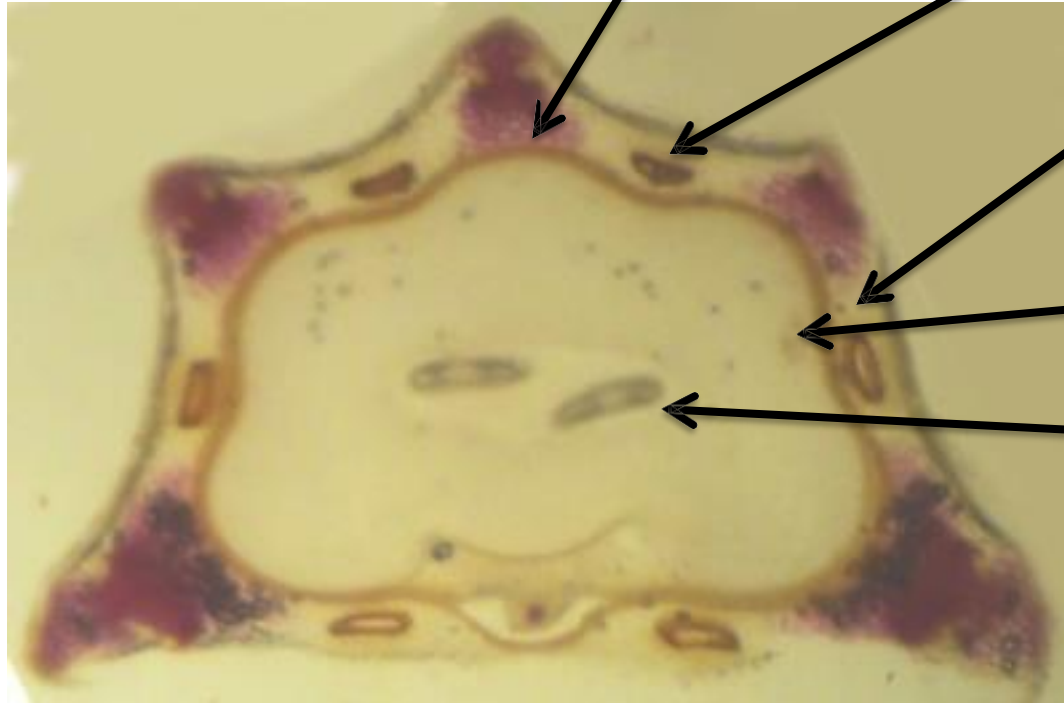
bundle

raphe

T.S.

Vascular
bundle

Simple
vittae



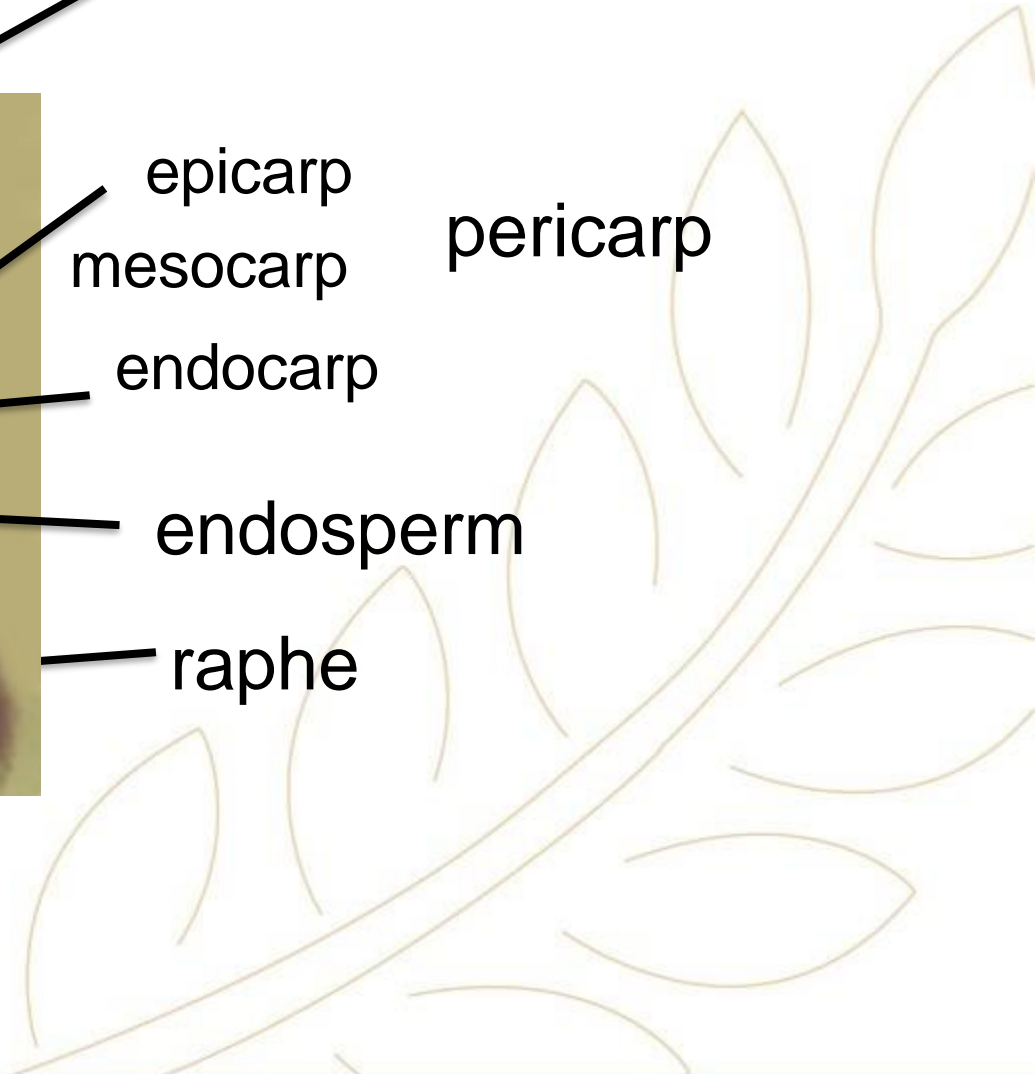
epicarp
mesocarp

pericarp

endocarp

endosperm

raphe



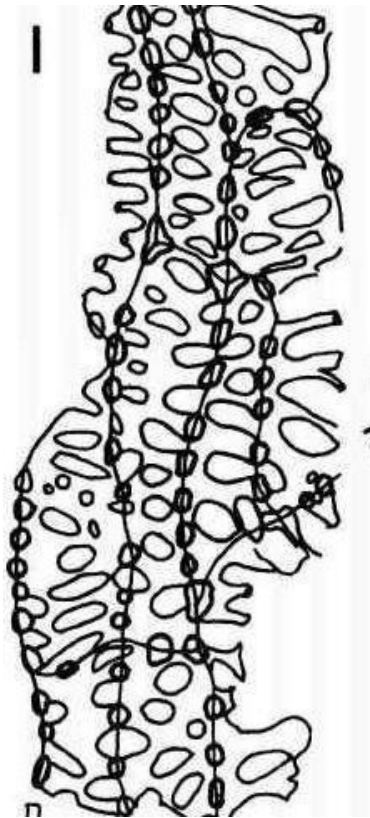
Powder:

- **Condition:** Fine powder
- **Colour:** Yellowish green
- **Odour:** Aromatic odour
- **Taste:** Aromatic taste

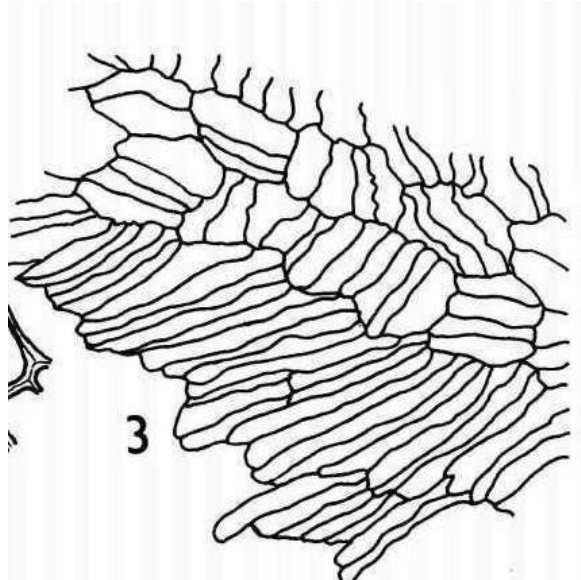


Key elements:

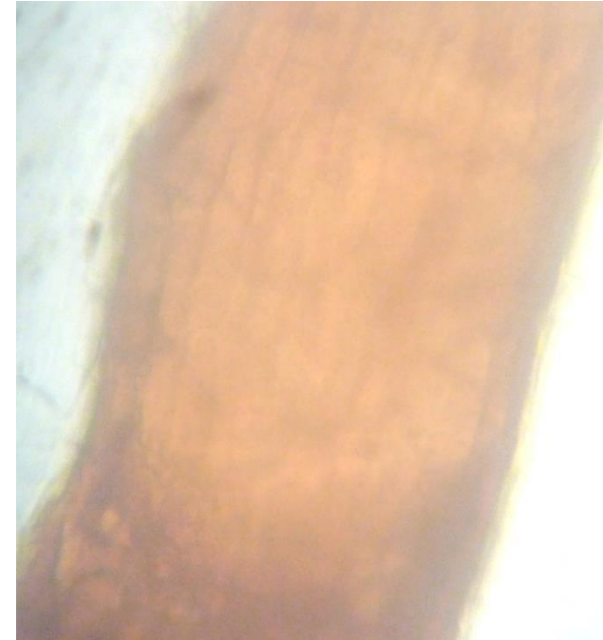
**Reticulate lignified
parenchyma**



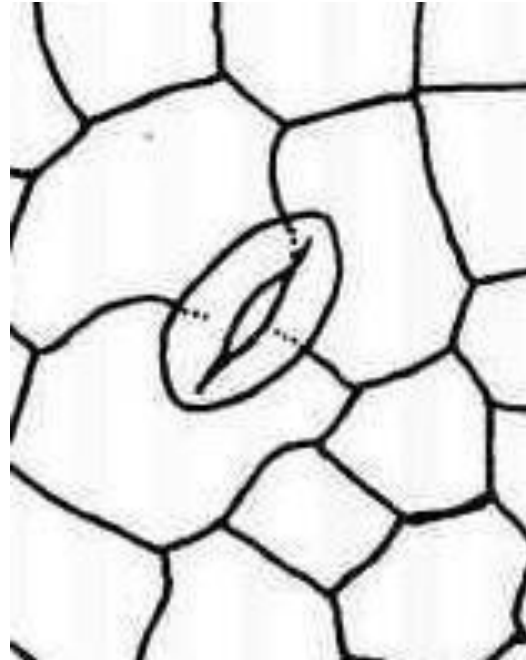
**Parquetary
endocarp**



**Simple
vittae**



**Epicarp: Straight wall, smooth cuticle,
anomocytic stomata.**



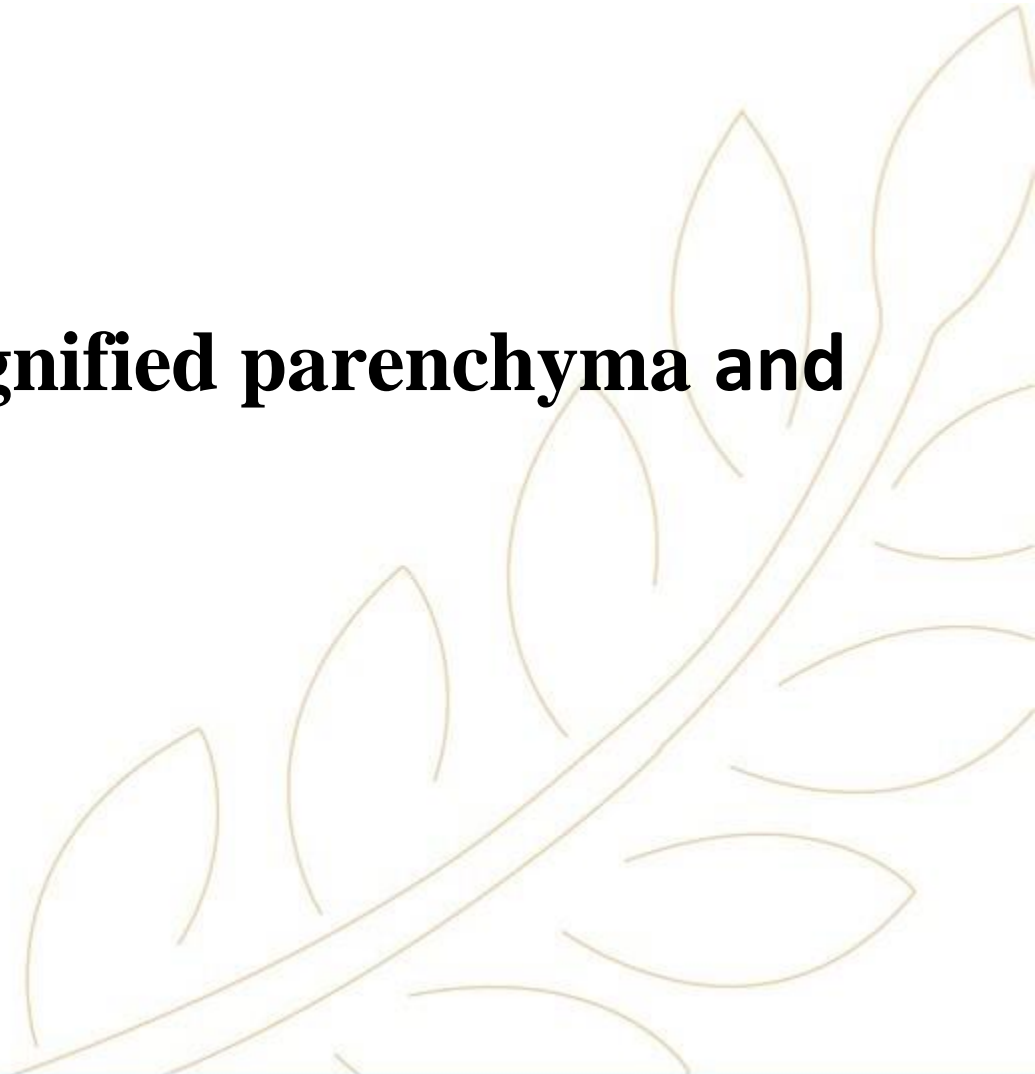
Microscopical Character:

Mount in KOH: All key elements

Mount in phloroglucinol : Reticulate lignified parenchyma and

Vascular bundle

Mount in Water: Negative



Uses

1. **Carminative** (relative the associated pain and cramping in GIT)
2. **Lactagogue**
3. **Mild expectorant**
4. **Aid to weight loss**





Thank You!

THE FIRST BRITISH HIGHER EDUCATION IN EGYPT

26th July Mehwar Road Intersection with Wahat Road, 6th of October City, Egypt

Tel: 00238371113 Postal code: 12451 Email: info@msa.edu.eg

Hotline: 16672 Website: www.msa.edu.eg