

Revision- PHG 112

1- In a tabular form, suggest a drug (name, part used, active constituent and chemical test) used for the treatment of each of the following symptoms
(24 marks, 4 marks each drug)

a-A pregnant lady suffering from constipation

b-An old man with diabetes

c-Mr. Mahmoud was diagnosed with severe renal colic due to the presence of kidney stones.

2- Correct the underline word at each sentence by a suitable term

The microphyle is the scar left by the removal of the seed from its funicle or stalk

Foenugreek is an example of a typical albuminous seed

3- Enumerate two of each of the following:

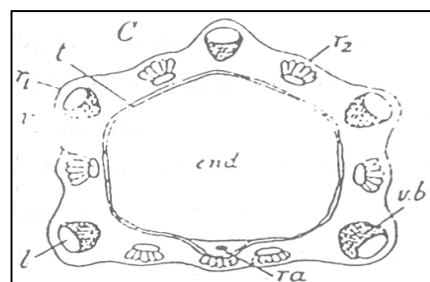
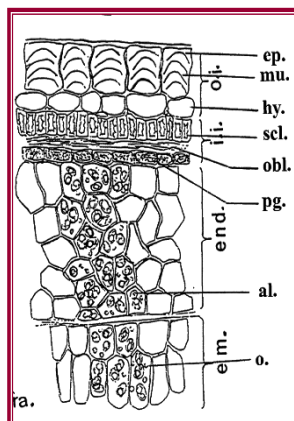
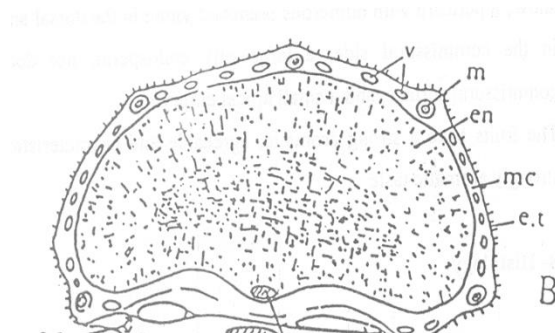
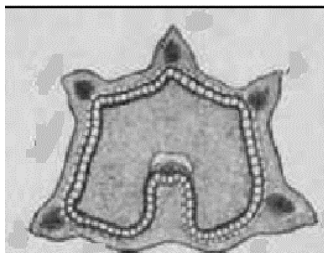
-Two crude drugs from different organs to promote her milk production and mention the main active constituents of these two drugs.

- Two drugs from different organs rich in volatile oils

-Two different pungent principles

4- Justify for each of the following statements:

5-Label the following T.S and identify the corresponding drug





6- Identify the following key elements, and answer the given questions

Powders: Linseed- foenugreek- anise

7- Compare between each pair of the following.

Ammi visnaga and Ammi majus (active constituents & uses)

8- Complete the given table, then answer the following questions:

	Drug name	Part used	Main active constituent	One use	Chemical test
A					
B					
C					